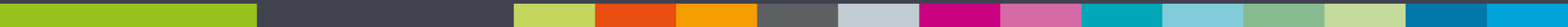




**Vaikuttavaa verkostoitumista**





# TURKU BUSINESS REGION



**CLEAN**



**HEALTH**



**EXPERIENCE**



**MARITIME**



**TECH**



## **TURKU SCIENCE PARK Oy Ltd**



SMART CHEMISTRY  
PARK

**Potkuri**

YRITYSNEUVONTA

**SparkUp**

STARTUP COMMUNITY



BLUE INDUSTRY  
PARK



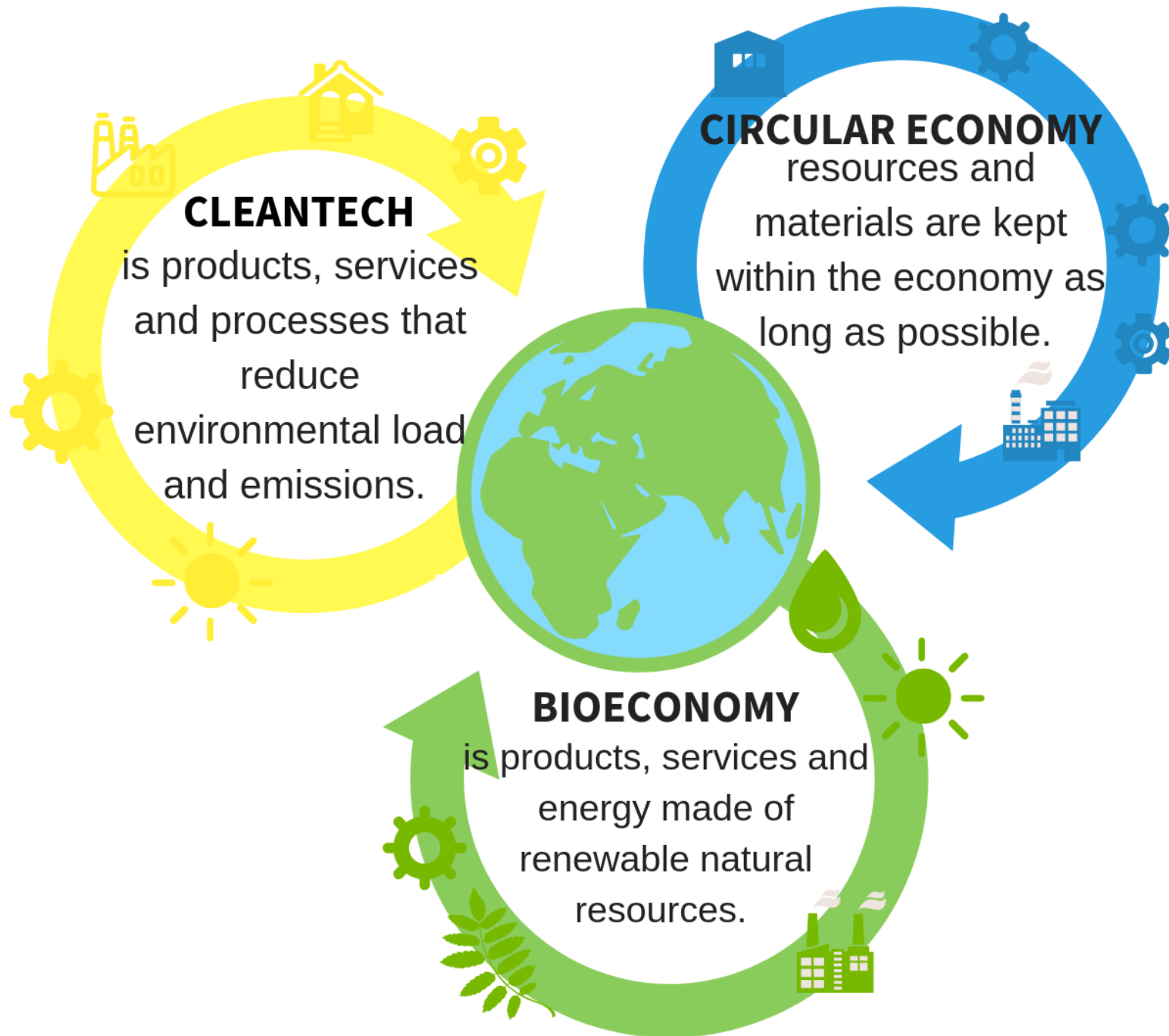
WEST FINLAND  
FILM COMMISSION

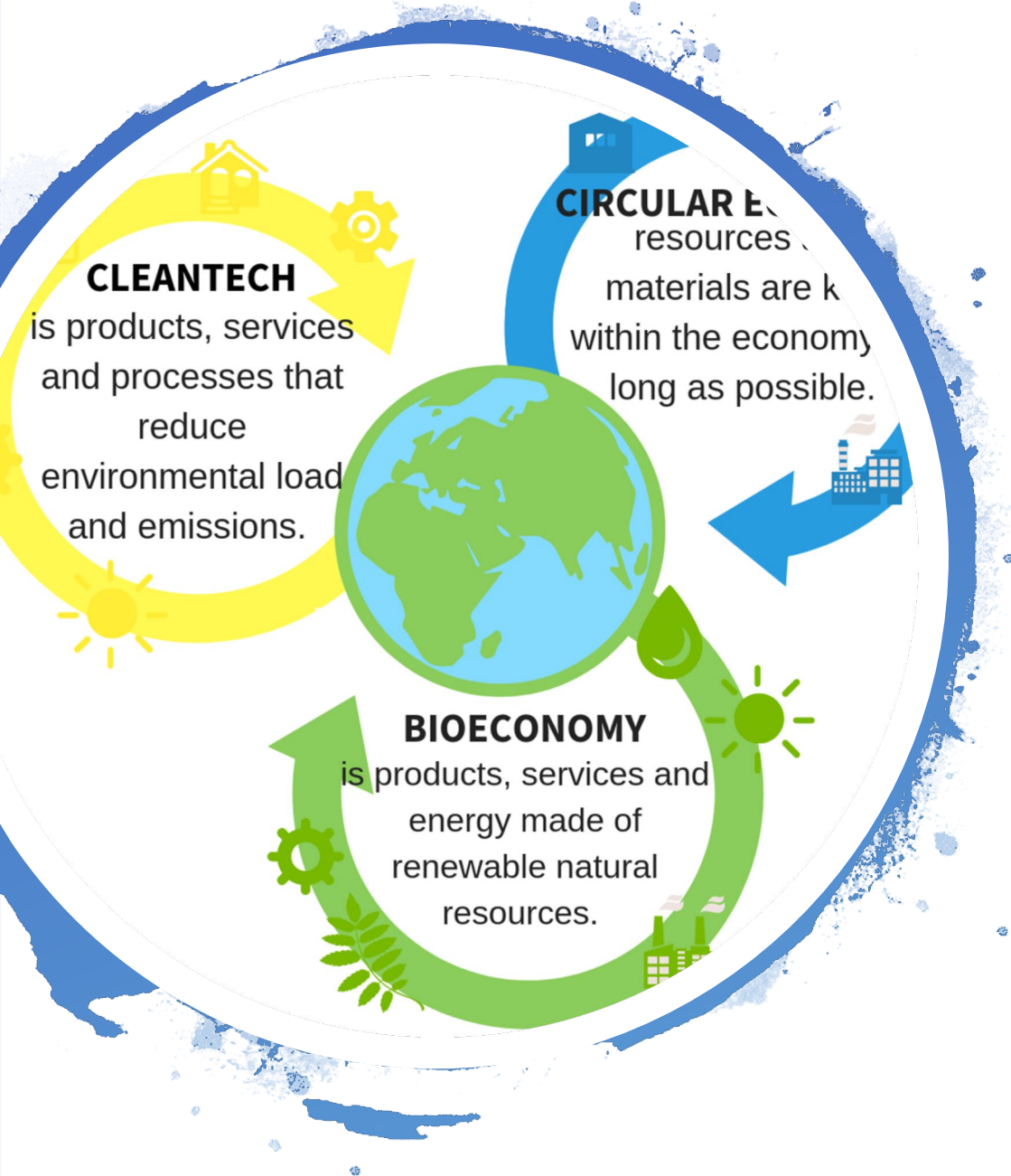


TURKU FUTURE  
TECHNOLOGIES



# Boosting sustainable business in bio- and circular economy ecosystems in Turku Business Region



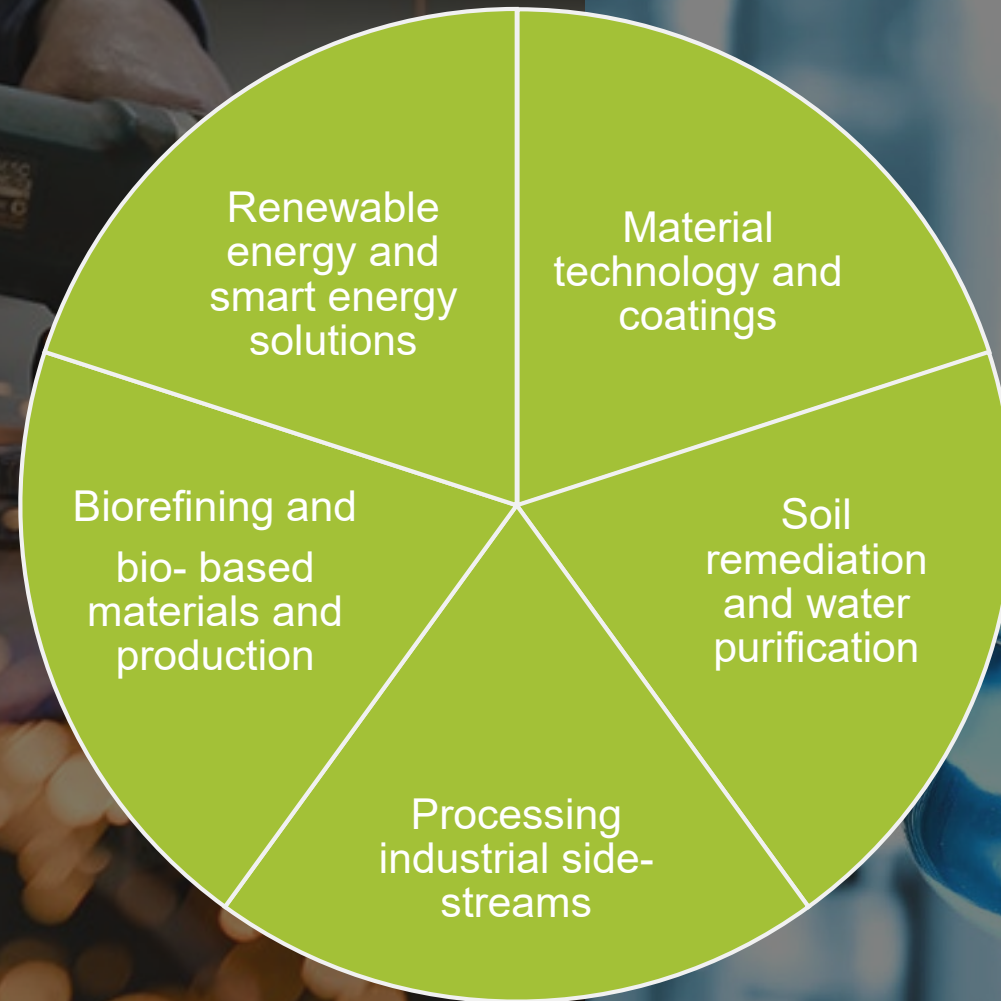


## Focus areas and actions

Batteries	Plastics to chemicals	Energy
Biobased production	CCU technologies	Construction materials & processs
Textiles	Water purification & Soil remediation	Digitalization & AI

## Core competencies in Turku region

➤ The competitiveness of the largest branches of Finnish industry are strengthened by innovations from Clean Turku companies.





# Clean-team

- We deliver expertise & business services to companies throughout their growth path
- We bring companies and research groups together – with the target to support companies in their strategic research questions. Universities and polytechnics are our natural collaboration partners.
- We build up national and International stakeholder networks.
- We develop the Smart Chemistry Park at Raisio industrial site to be a platform for company collaboration and growth.



Linda  
Fröberg-Niemi



Reeta  
Huhtinen



Olof  
Malmström



Julius  
Manninen



Tero  
Karhi

# CleanTurku services



# SERVICES

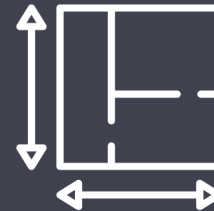
CUSTOMER CONTACT



NEED:  
SCREENING &  
ANALYSING



CO-CREATION



FACILITIES AND  
INFRASTRUCTURE



BUSINESS DEVELOPMENT



NETWORKS



VISIBILITY



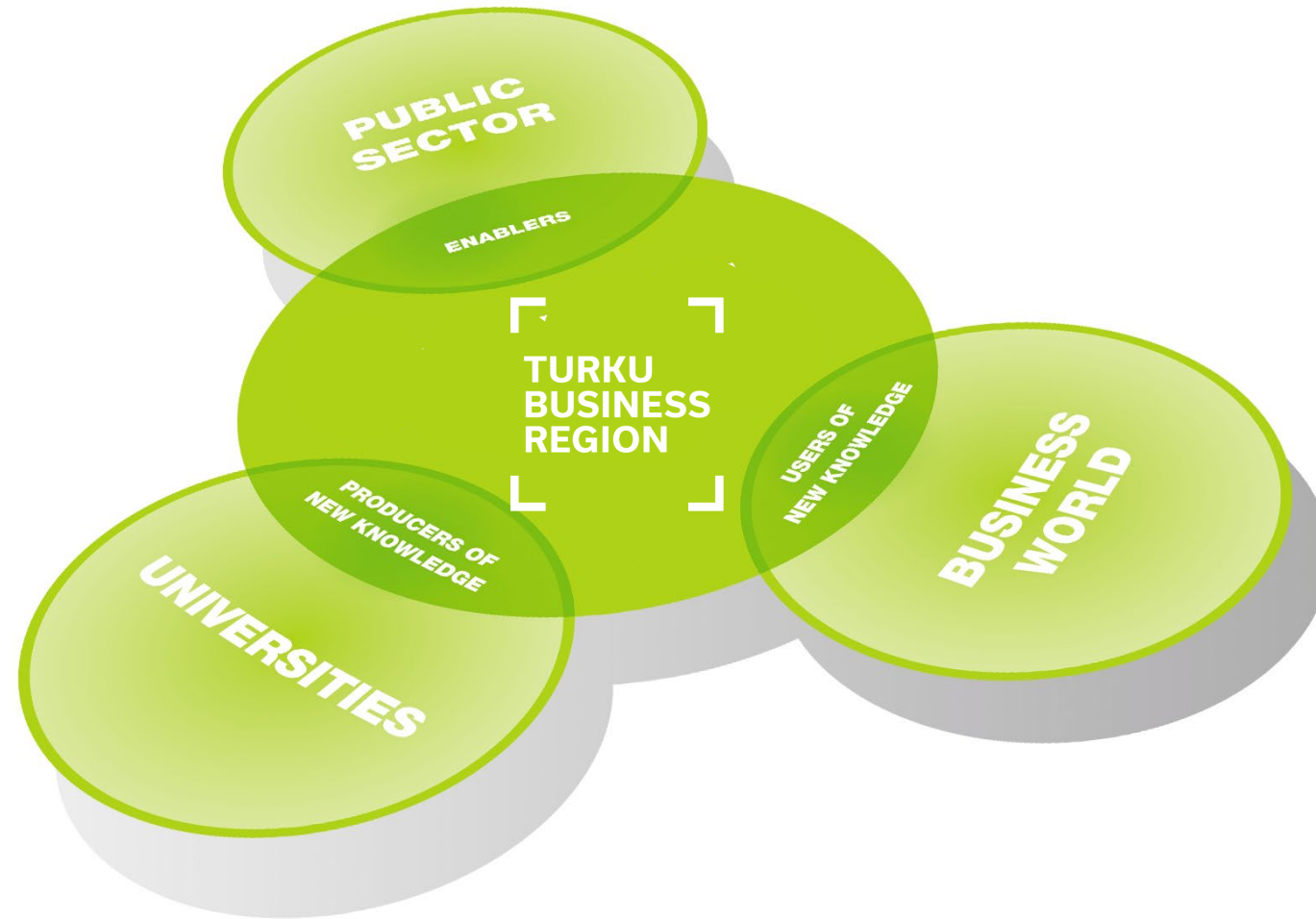
EVENTS



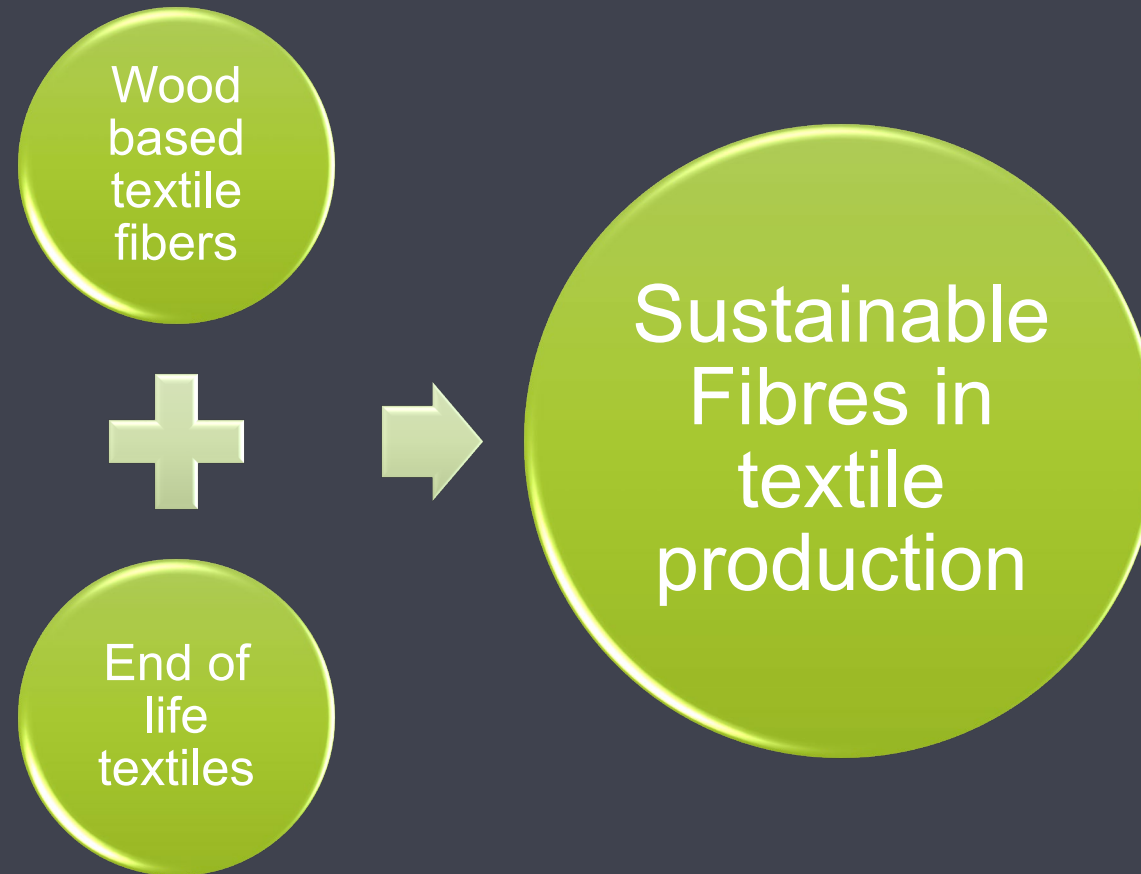
RESEARCH  
COLLABORATION



FOLLOW UP  
AND  
NEXT STEPS



# Sustainable Fibres in textile production





# SMART CHEMISTRY PARK

**SOLUTIONS TO GLOBAL ENVIRONMENTAL  
CHALLENGES**





# CH BIOFORCE

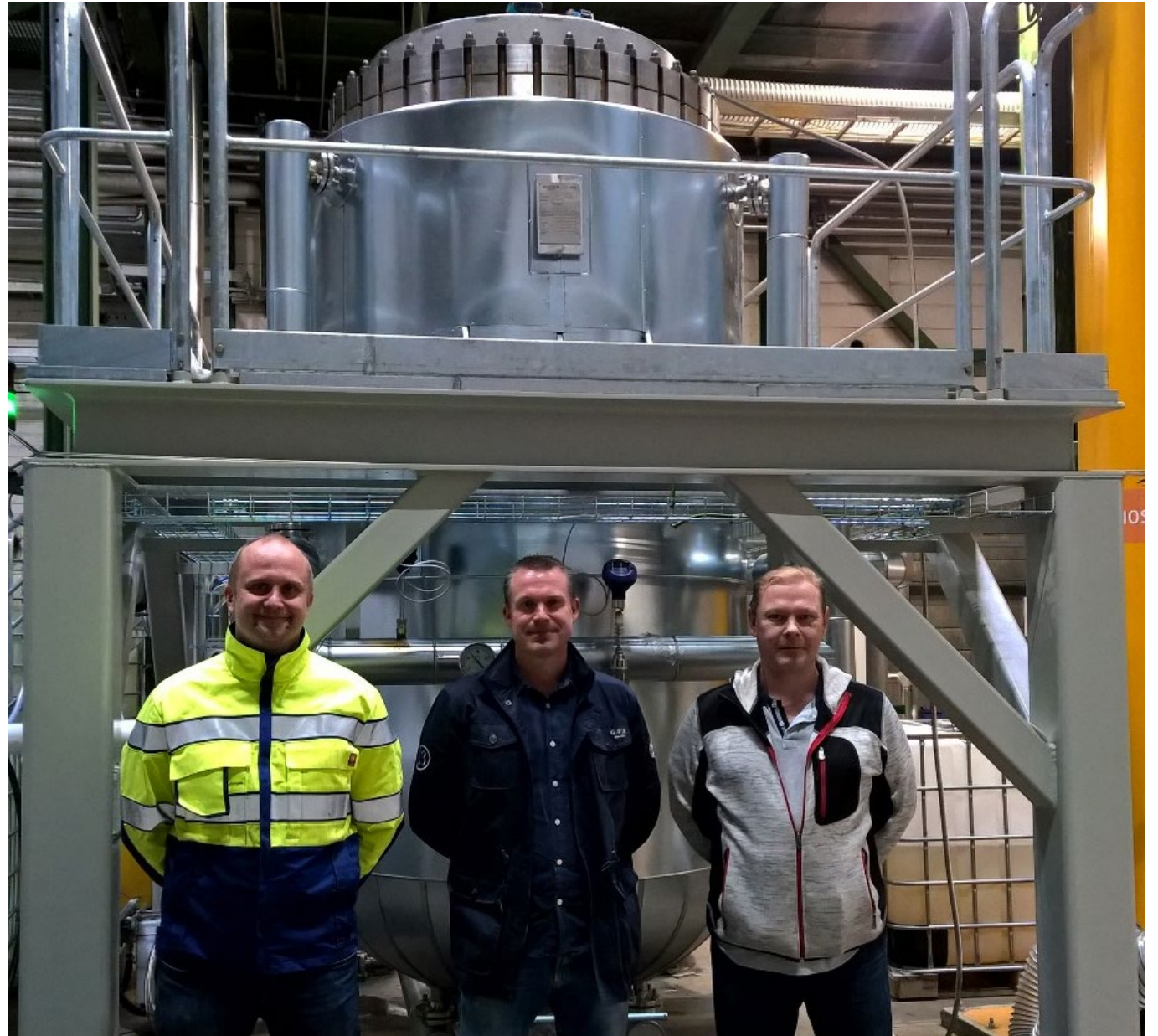
---

Lari Vähäsalo, PhD



# CH-Bioforce pilot

---





**CH-Bioforce is launching a revolutionary technology** for converting all biomass components into high-value material streams in an economically profitable way, thus replacing fossil and food-based raw materials.

**Consumer board**



**Textiles**



**Plastics**



**Adhesives**



in co-operation

**CH**  
CHEMEC

**CH**  
POLYMERS

**FP**  
PIGMENTS

**CH**  
BIOFORCE



Smart Chemistry Park palkittiin Suomalaisten Kemistien Seuran ry (SKS), vuonna 2017 perustetulla uudella kiertotalousinnovaatiopalkinnolla.

# One-on-one meetings/ Turku Science Park Ltd



Linda  
Fröberg-Niemi



Julius  
Manninen



**Networking with impact**

