

# FIBERSORT

Interreg NWE 2016-2020

13 MAY 2020

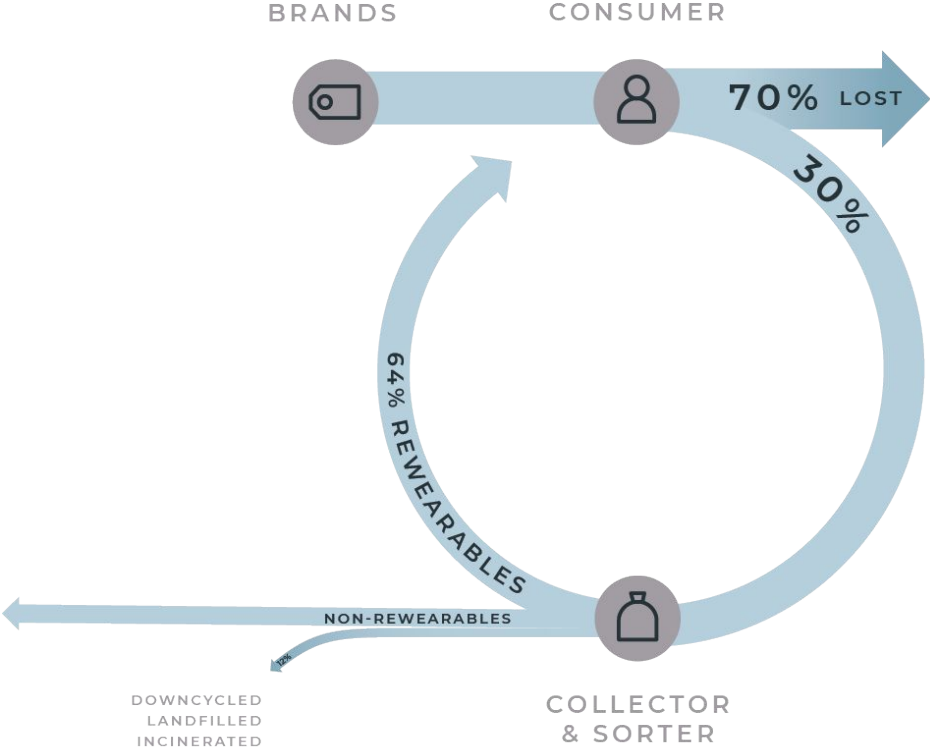
To deliver on this it is our **MISSION** to deliver practical and scalable circular economy solutions to the world.



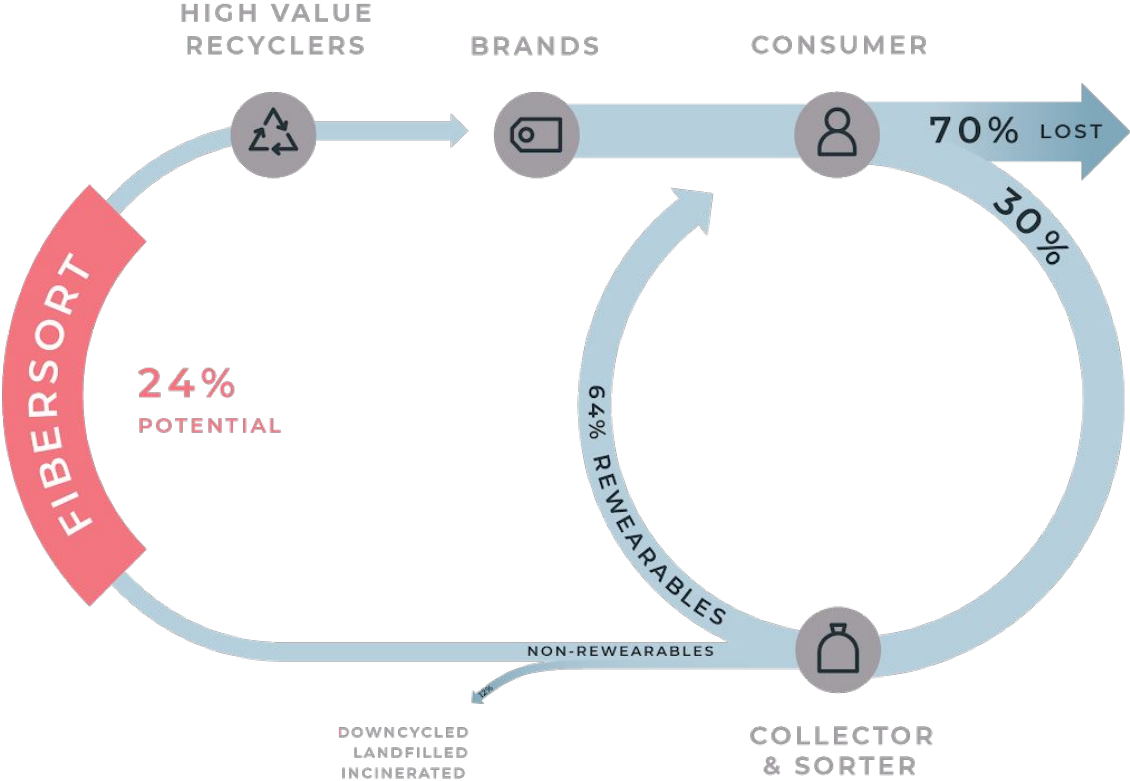
**C** **CIRCLE**  
**ECONOMY**

It is our **VISION** to contribute to a prosperous world of finite resources by accelerating the transition to a circular economy.

# THE WHY



# THE HOW



# THE PROJECT



## TIMELINE

2016 - 2020

## TOTAL BUDGET RECEIVED FROM INTERREG NWE

€2 million of ERDF

## TOTAL PROJECT BUDGET

€3.5 million





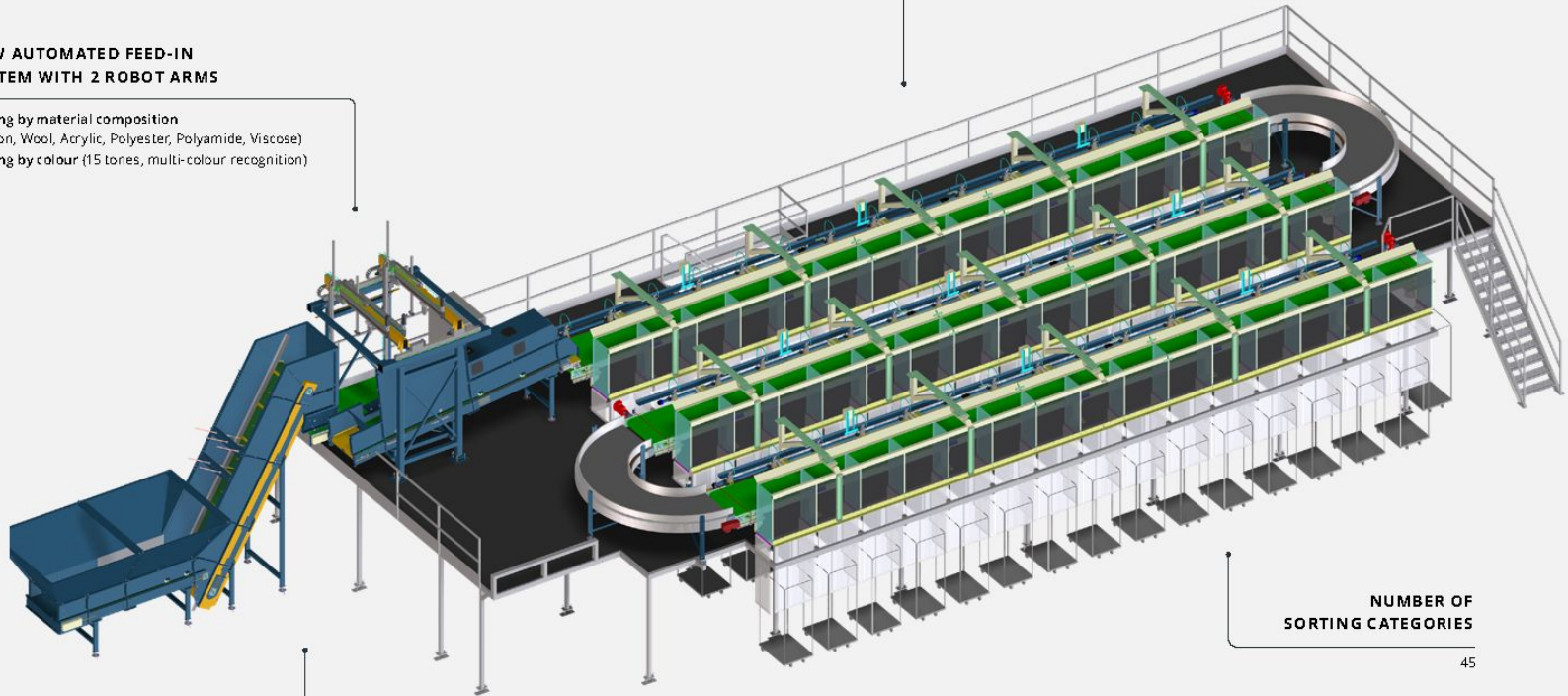
# THE FIBERSORT TODAY

## NEW AUTOMATED FEED-IN SYSTEM WITH 2 ROBOT ARMS

Sorting by material composition  
(Cotton, Wool, Acrylic, Polyester, Polyamide, Viscose)  
Sorting by colour (15 tones, multi-colour recognition)

## THROUGHPUT ACCURACY

60%



## PRODUCTIVITY

1.5 sec/piece - Theoretical capacity: 3 sec/piece per robot. Robots are modular and expandable up to 4 on the same line.

## NUMBER OF SORTING CATEGORIES

45



# THE BARRIERS FOR IMPLEMENTATION



A growing mountain of non-rewearable textiles



Negative perception on recycled content



Lack of urgency for textile waste



The changing composition of post-consumer textiles



The unknown origin of post-consumer textiles



Higher prices for recycled content



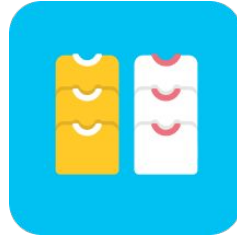
No market pull for non-rewearable textiles



# WHAT CAN YOU DO TO CLOSE THE TEXTILES LOOP?



**COLLECTOR**



**SORTERS**



**RECYCLERS**



**BRANDS**



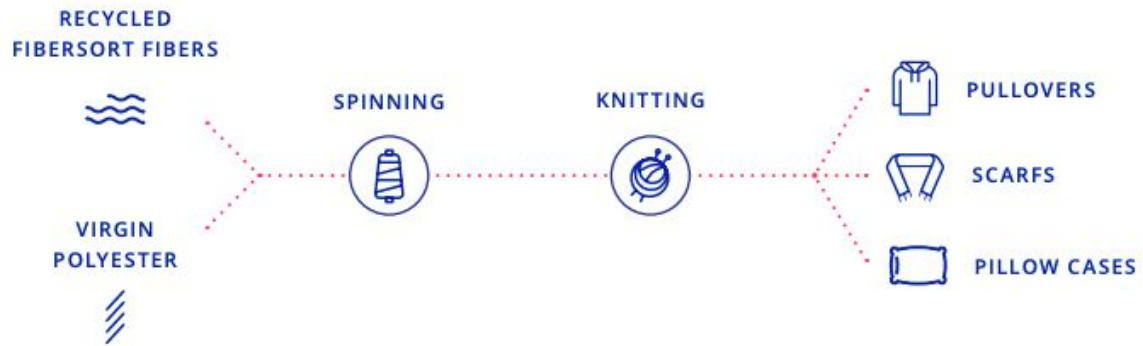
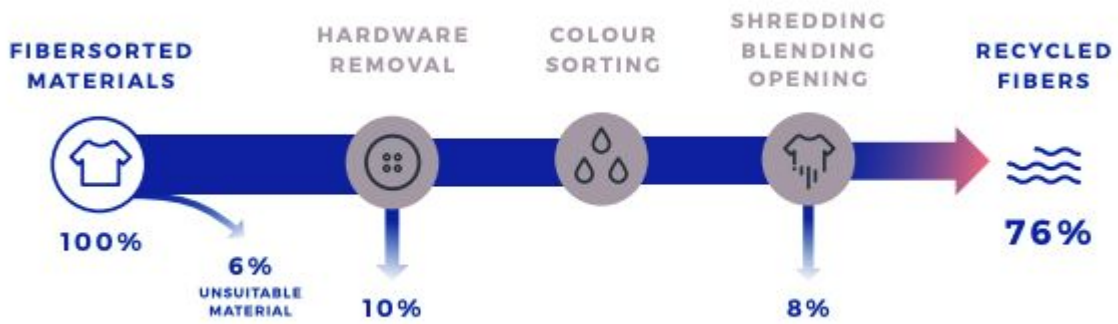
**POLICY MAKERS**



**CONSUMERS**

[fibersort.eu](https://fibersort.eu)

**RECYCLING TRIALS**



# WHAT'S NEXT?

## FIBERSORT TECHNOLOGY OPTIMISED AND COMMERCIALISED

Valvan Baling Systems

## FIBERSORTED POST-CONSUMER TEXTILES

Smart Fibersorting - Wieland Textiles

## CONTINUED RESEARCH & IMPLEMENTATION - [Circle Economy](#)

---

RESEARCH	TEXTILES SCAN	ON COURSE
Upcoming: Employment effects of CE on textiles end-of-use	At regional, city or business levels	<a href="#">Training modules</a> for brands and educational institutions

---



# THANK YOU!

A photograph of a server room aisle. The perspective is looking down a long, narrow aisle between rows of server racks. The racks are blue and have many yellow and blue cables plugged into them. On the floor in the foreground, there is a crumpled red sweater. In the distance, a red light is visible at the end of the aisle.

NATALIA PAPU CARRONE  
[natalia@circle-economy.com](mailto:natalia@circle-economy.com)